



ATM Qness GmbH  
Emil-Reinert-Str. 2  
57636 Mammelzen  
Germany

Phone +49 2681 9539-0  
E-Mail [info@qatm.com](mailto:info@qatm.com)

ATM Qness GmbH  
Reitbauernweg 26  
5440 Golling  
Austria

Phone +43 6244 34393  
E-Mail [info.at@qatm.com](mailto:info.at@qatm.com)

[www.qatm.com](http://www.qatm.com)

## **GALAXY CONTERO H – EVERYTHING YOU NEED TO KNOW ABOUT THIS FINE GRINDING DISC**

Welcome to a special highlight: We present the new CONTERO H fine grinding disc! Discover the product features, application examples and recommended uses of this innovation with us. The discs are available in diameters of 250 mm and 300 mm - ready for your three step preparation...

### **PRODUCT INFORMATION CONTERO H**

- | The Galaxy Contero H is a rigid fine grinding disc for use with diamond suspensions.
- | Diamond suspensions of 15 to 6 µm are recommended.
- | It provides easy and efficient handling.
- | Ready-to-use and maintenance-free (no dressing or refreshing required).
- | Achieves very good flatness with high material removal and excellent edge retention.
- | Multi-stage grinding with different SiC abrasives, as well as pre-polishing, are combined into one preparation step.
- | Contero H is ideal for materials with a hardness of more than 300 HV.
- | Contero H is available in Ø 250 and 300 mm.

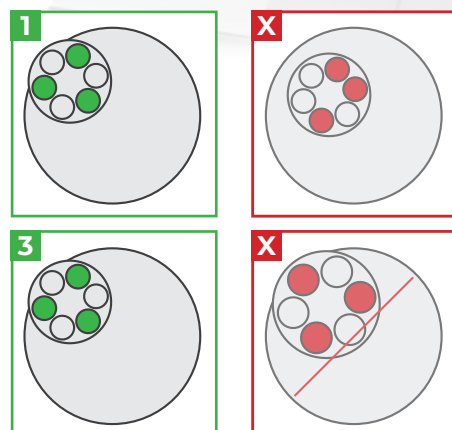
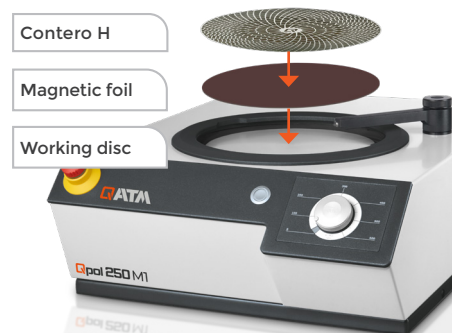


## RECOMMENDATION FOR THE USE OF CONTERO H

- The sample holder should be positioned so that it extends beyond the edge of the working wheel.
- Highest flatness and surface quality are achieved in synchronization mode.
- It is recommended that the specimen holder be set to rotate slower than the working wheel. This prevents the formation of a motion mark on the grinding wheel and increases service life.
- Rotation speeds of 100 to 125 rpm have been found to be effective for the sample holder. A speed of 150 rpm is recommended for the working wheel.
- Contero H is suitable for both single and central force.
- If possible, the sample holder should be loaded symmetrically in both modes.
- To ensure a long service life and the best possible grinding results, the sample holder should not extend beyond the center of the working wheel.
- The sample should not exceed the center of the working wheel by more than one-third of its diameter.

- Recommended diameter of the sample holder:

Working wheel	Ø 300 mm	Ø 250 mm
Recommendation	Ø 160 mm	Ø 130 mm
Maximum	Ø 184 mm	Ø 160 mm



## ADVANTAGES AND APPLICATIONS OF CONTERO H

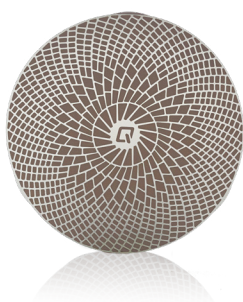
### Product Advantages

- Maintenance-free and ready to use
- High surface quality and homogeneous scratch pattern
- High stock removal rate, flatness and edge retention
- Long service life
- Compatible with diamond suspensions from 6 to 15 µm

### Recommended Applications

- Ideal for materials with a hardness of 300 HV or more
- Medium-hard to hard steels
- Edge examinations
- Characterization of hard-coatings
- Sintered Carbides
- Cermets (Ceramic composites with metal matrix)
- High sample throughputs

## ORDER INFORMATION CONTERO H



### CONTERO H FINE GRINDING DISCS

#### Description

Ø

for medium-hard to hard materials

• Fixation system: Magnetic foil

NEW	95017605	1 Pc.	Contero H fine grinding disc	250 mm
NEW	95017606	1 Pc.	Contero H fine grinding disc	300 mm













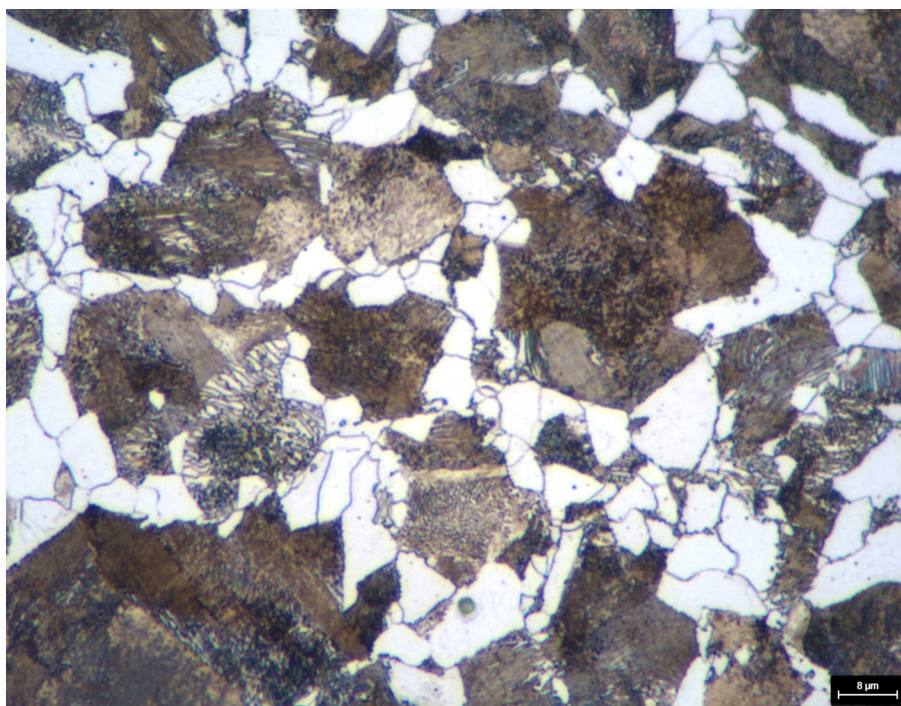
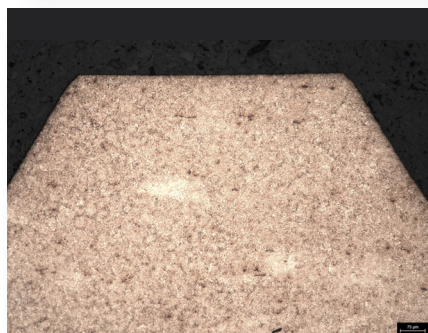
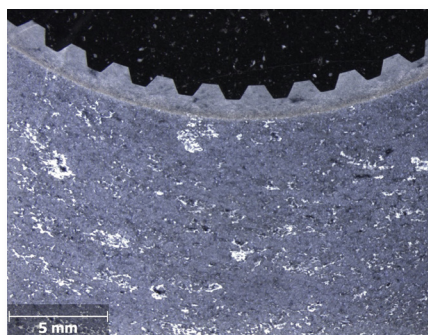


Automatic grinding and polishing machine Qpol 300 AI Eco+

## APPLICATION EXAMPLE CONTERO H: GEAR WHEEL GRINDING/POLISHING

Device	Qpol 300 AI Eco+	
Sample holder	6 x 40 mm	Item no.: Z5446025
Pressure	Single pressure	

STEP	MEDIUM		 rpm	 rpm	 Single Pressure N	 min
 Grinding	VEGA 75 µm	H <sub>2</sub> O	200	120 ►► Synchronous Rotation	30	Until plane (1:30)
 Fine grinding	Contero H	Dia-Complete Poly, 9 µm	150	120 ◄◄ Counter Rotation	30	5:00
 Polishing	SIGMA	Dia-Complete Poly, 3 µm	150	120 ►► Synchronous Rotation	30	5:00
 Polishing	ZETA	Dia-Complete Poly, 1 µm	150	120 ►► Synchronous Rotation	25	2:00
 Etching (chem.)	3% (alc.) Nitric acid	-	-	-	-	0:02
Note	<ul style="list-style-type: none"> <li>- Pre dosing time for Dia-Complete 9, 3 and 1 µm: 3 s</li> <li>- Dosing interval and dosing duration for 9, 3 and 1 µm: Every 30 s for 1.5 s</li> </ul>					



Find out more at  
[www.qatm.com](http://www.qatm.com)