



### CETATEST 825 - New generation of innovative leak testers with differential pressure sensor

The CETATEST 825 is the fourth generation of CETA differential pressure testers, as a variant of the new series of test devices CETATEST x25. Following the x15 series, known for the quality, reliability and durability of its devices, the new x25 series features a large number of technical innovations.

#### System architecture

Industrial PC: Quad Core CPU, 1.8 GHz,  
4 GB RAM, 128 GB SSD,  
Micro-controller system for the test  
process control: 32-bit ARM  $\mu$ C / 84 MHz

#### Signal processing

Fast 24-bit A/D converter, real-time  
processing of measurement signals

#### Valve types

Sliding valve or poppet valve  
(depending on the application)

#### System features

Flow-optimised pneumatics  
Low inherent volume of the measuring  
circuit  
Integrated security functions  
External sensors can be integrated

#### Pressure sensors

Gauge pressure sensor  
Differential pressure sensor

#### Measurement ranges

$\pm 500.0$  Pa /  $\pm 5,000$  Pa  
(internal resolution: effectively 0.01 Pa)

#### Result units

Pa, hPa, PSI, Pa/s, hPa/s, PSI/s, mbar·l/s,  
ml/min, ml/h, l/min, l/h, mmHg, mmWs, Torr

#### Pressure ranges

-1 bar, 200 mbar, 1 bar, 6 bar, 10 bar,  
20 bar, 30 bar  
negative and positive gauge pressure  
ranges can be combined (e.g. -1 bar / +10 bar),  
other pressure ranges on request

#### Maximum Deviations

Gauge pressure: 1 % \*  
Specification for combined devices based  
on positive gauge pressure  
Differential pressure: 0.5 %  
referred to measuring range

#### Test modes

Pressure decay  
Optional: sealed component, dynamic  
pressure, pressure steps, pressure rise

#### Additional functions

**Standard:** nominal pressure optimisation,  
prefill, pulsing, smooth filling, variable zero  
point

**Optional:** program series, temperature  
compensation, test repetition, free pro-  
grammable control valves

#### Operation

Touch screen, dual jog dial,  
separate start / stop buttons,  
password protected user levels

#### Display

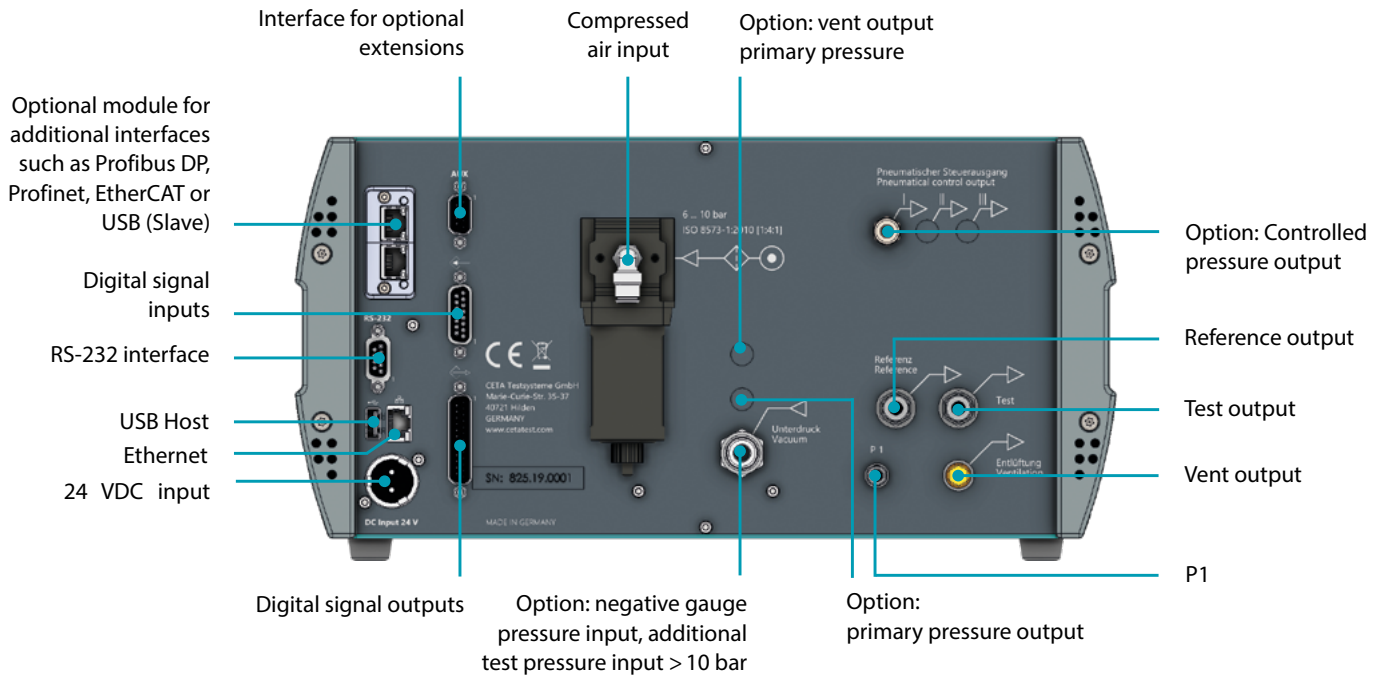
7-inch color screen, various graphical  
diagrams (measurement curves, histogram,  
measurement series overview), list of  
results

#### System monitoring

Still-Alive-Check with differential pressure  
sensor monitoring, automatic function  
control (option), control of the compressed  
air supply, consecutive zero results

#### Memory

For more than 1 million measurement  
results, 256 individually parameterisable  
test programs with alpha-numeric  
program names, export / import of test  
programs via device interfaces or by usage  
of a USB storage device



## Interfaces

I/O interface for start/stop/reset, program selection, device status, system errors, test results (pass/fail)

RS-232, USB (host), Ethernet and optional interfaces allow additional functions like parameterisation, measurement results, detailed information in real time (e. g. measurement curve), failure messages

An optional module can be used to implement additional interfaces such as Profibus DP, Profinet, EtherCAT or USB (Slave).

The CETATEST 825 is fully interface compatible with the CETATEST 815 and well prepared for Industry 4.0 requirements.

## Further functions

Result statistics, cycle counter, recording of measurement series and measurement curves, Dynamic Link Library (DLL) for RS-232 interface programming, integration of test part image / barcode / QR code, user administration, export of test parameters, measurement curves and measurement series to USB storage media

## User support

Automatic parameter determination  
Leak rate set-up wizard

## Teach-in mode

Maintenance monitoring  
Overview of parameter changes

## Power supply / Power consumption

Test device: 24 VDC / max. 50 W  
External power supply (optional):  
Input 100 - 240 VAC / 47 - 63 Hz  
Output 24 VDC  
UL certified power supply unit

## Air supply

6 - 10 bar, min. 0.5 bar above test pressure resp. 50 mbar below evacuation pressure  
Test devices with pressure ranges higher than 10 bar have an additional connection for the external compressed air > 10 bar.  
Quality or purity according to ISO 8573-1:2010 [1: 4: 1]

## Pneumatic connections

Input (compressed air supply):  
6 mm plug-in fitting  
Port for test part: 6 x 1 mm fitting,  
6 mm clamping ring (option),  
up to three pneumatically driven outputs (option)

## DAkKS-accredited calibration

All leak, mass and flow testers as well as pressure manometers and calibration

standards are delivered with a DAkKS-accredited calibration certificate in accordance with DIN EN ISO/IEC 17025 at no extra cost.

DAkKS = German Accreditation Body

## Dimensions and weight

W x H x D: 367 mm x 183 mm (4 U) x 435 mm  
Weight: approx. 12,5 kg

## Scope of delivery

Special packaging, documentation on device, DAkKS-accredited calibration certificate, EU declaration of conformity, spare sealing caps and spare caps for union nuts coupling or spare clamp rings

## Warranty

3 years in case of yearly maintenance, optional prolongation to 5 years

## Accessories (optional)

Power supply with UL certification, power cord, filter combination, test leak, D-Sub connector incl. cable for inputs and outputs (PLC communication), leaktight 3/2-way valve, application software CETA Soft 2G, scanner interface, further accessories in the CETA accessories catalogue