



QPOL XL

PRODUCT PRESENTATION

Qpol XL

A NEW BENCHMARK IN GRINDING/POLISHING



Qpol XL

300 TO 350 MM WORKING WHEEL DIAMETER

**POWERFUL AND PRECISE WITH
PARTICULARLY HIGH SAMPLE THROUGHPUT**

part of **VERDER**
scientific

QATM'S "STRONGEST" POLISHING MACHINE

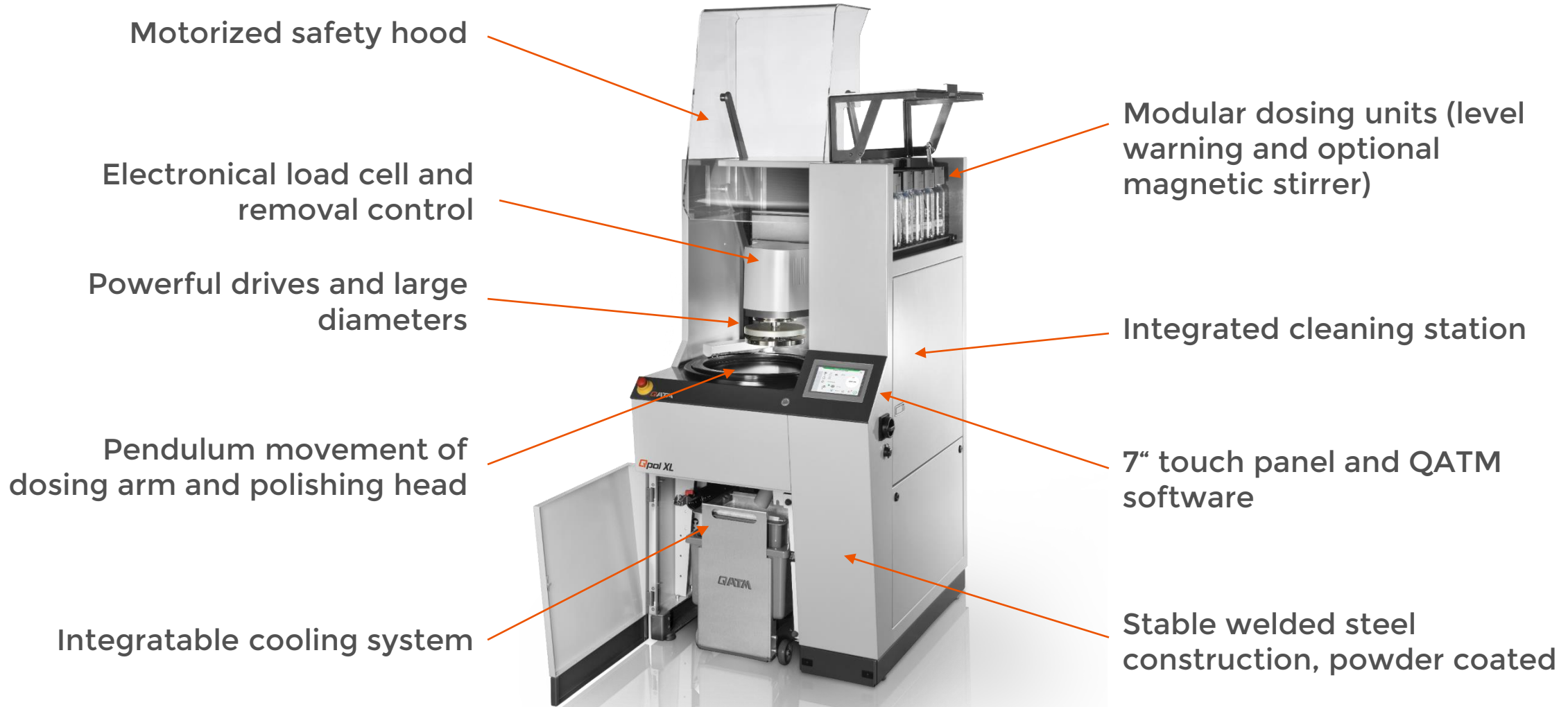
QATM's first 350 mm Grinding/Polishing machine



EFFICIENCY –
EXTRA LARGE

QPOL XL – CONCEPT

Robust engineering – functional design



Motorized safety hood

Electronical load cell and removal control

Powerful drives and large diameters

Pendulum movement of dosing arm and polishing head

Integratable cooling system

Modular dosing units (level warning and optional magnetic stirrer)

Integrated cleaning station

7" touch panel and QATM software

Stable welded steel construction, powder coated

QPOL XL – HIGHLIGHTS

Key features overview



- | Powerful drives (2,2 kW and 0,75 kW)
- | Large working wheel (max. 350 mm)
- | Electronic controlled grinding/polishing forces (only central pressure: max. 750 N)
- | Integrated cleaning station (optional)
- | Integrated removal measurement
- | Modular dosing system
- | New safety concept (motorized safety hood)

QPOL XL – HIGHLIGHTS

Key features overview

- | Stable welded steel construction, powder coated
- | 7" touch screen with intuitive QATM user software
- | Pendulum movement for grinding / polishing head
- | Motorized swiveling dosing arm for even lubrication of the working wheel
- | Manual preparation mode



MOST COMMON APPLICATIONS

- | High sample throughput
- | Large samples

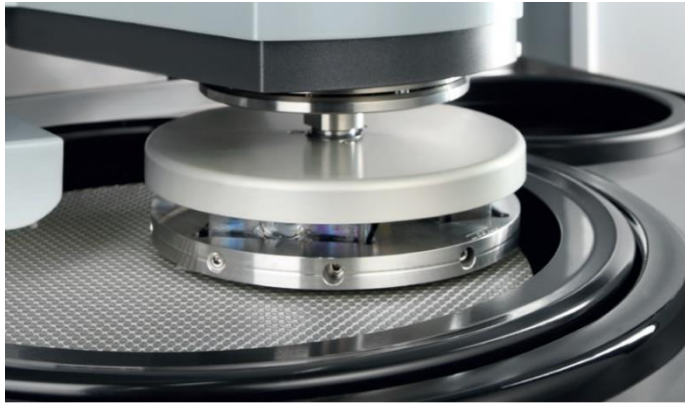
TYPICAL USER

- | Large Laboratories
- | Steel, aluminum, titanium, ceramic ... plants
- | Hardening plants
- | Foundries



QPOL XL – HIGHLIGHTS

Intelligent features included as standard



Removal measurement



- | Convincing performance data
- | Working wheel cooling



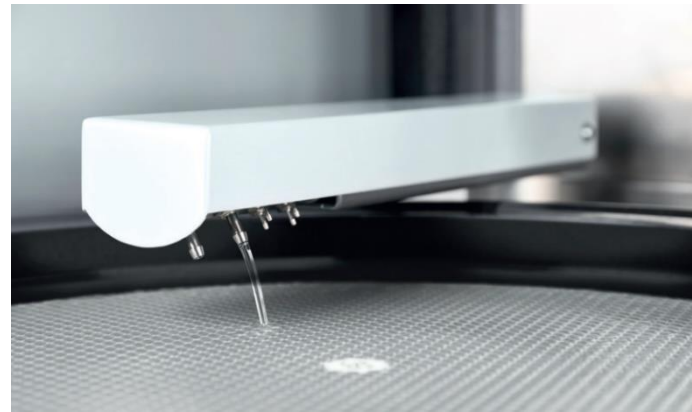
Advanced technology and modularity

QPOL XL – HIGHLIGHTS

Intelligent features included as standard



Maximum safety



Motorized swiveling dosing arm

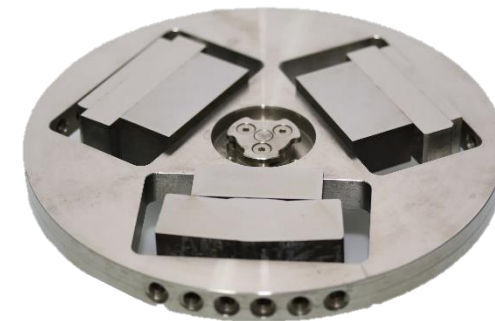


Cleaning boost

QPOL XL – CLEANING STATION (OPTION)

Integrated cleaning station for clean preparation processes

- | Automatic cleaning step
- | Cleaning with water (high pressure), ethanol and compressed air
- | Spin cycle at up to 800 rpm
- | Adjustable cleaning parameters
- | Preparation for external suction



QPOL XL – MODULAR DOSING SYSTEM

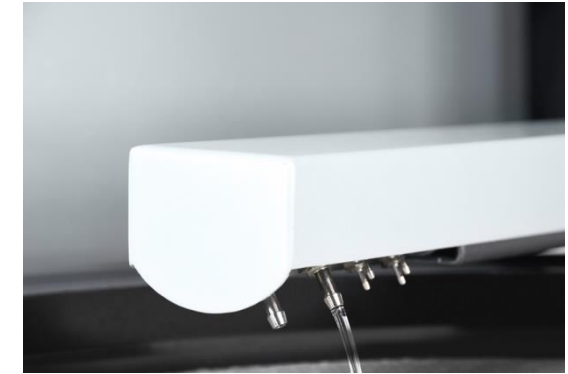
According to your needs



Modular dosing system



LED illumination and soft closing door



Automatic cleaning process



Magnetic stirrer and level warning



Refillable during operation

QPOL XL – EASY-TO-OPERATE

Down to the last detail



Manual mode

Manual preparation
Dressing of consumables



Integrated cleaning hose



Easy cleaning of safety
hood

PUSH-TO-UNLOCK
SAMPLE HOLDER MOUNTING

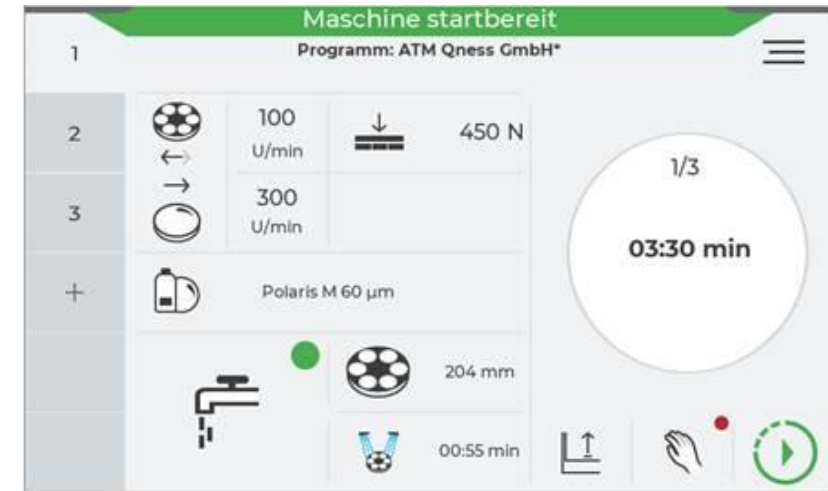
SIMPLE AND TOOL-FREE CHANGING OF SAMPLE HOLDER

Illumination of the complete working area with energy-saving LED lights

QPOL XL – OPERATION

User interface

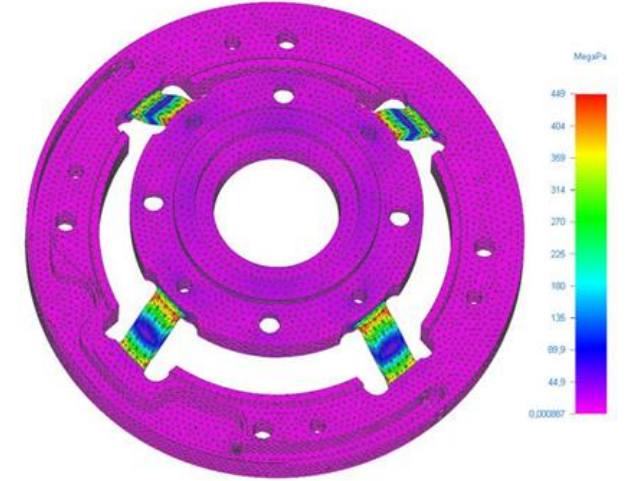
- | Intuitive and modern design
- | 7" touch screen
- | Up to 200 programs and complete preparation methods storable
- | User Account Management with variable user rights
- | Status display and acoustic signal
- | USB / Ethernet interface for remote maintenance and data transfer



QPOL XL – ADVANCED TECHNOLOGY

Electronic measurement system

- | Electronic controlled pressing forces (central pressure: 50 - 750 N)
- | Precise grinding/polishing forces -> high repeatability
- | Maintenance-freedom
- | Collision detection
- | Mechanical overload and damage protection

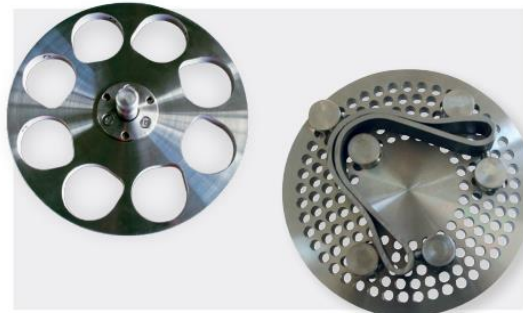


ACCESSORIES

According to your needs



Settling tank or
Recirculation cooling
(with shift valve)



Sample holders



Levelling device



Signal lamp



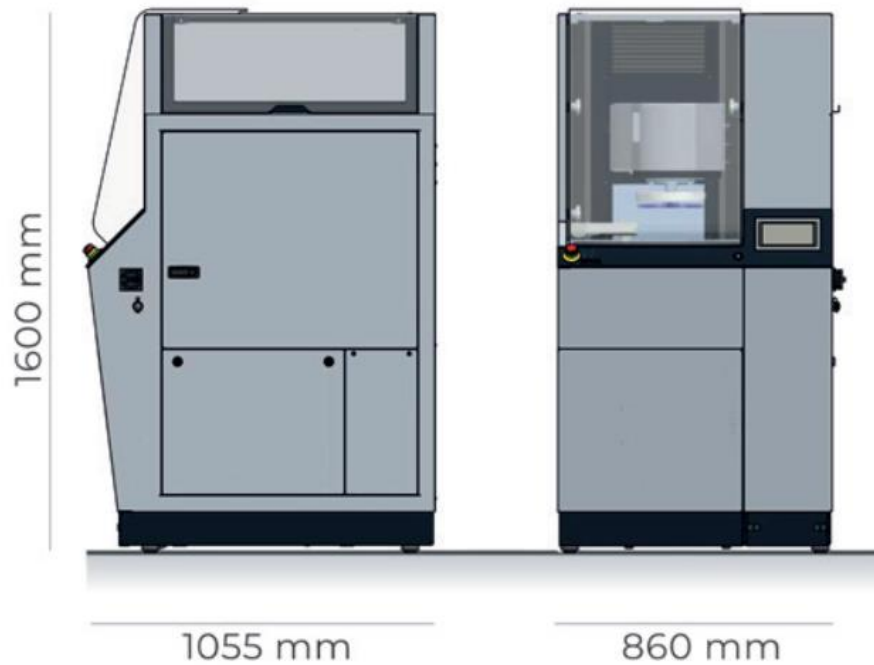
Consumables

Discs in \varnothing 350 mm

Suspensions in 5 or 10 l
containers

QPOL XL – TECHNICAL DATA

Facts and figures



Application	Automated grinding and polishing of materialographic specimens
Fields of application	Preparation of specimen surfaces for materialographic analysis
Working wheel	Ø300 / 350 mm
Speed working wheel	variable (50 – 600 U/min)
Running direction working wheel	right
Sample holder	Ø159 - 204 mm
Speed sample holder	variable (50 – 350 U/min)
Running direction sample holder	right / left
Pressing system	Central pressing force
Sample holder pressing force	50 – 750 N
Drive power working wheel	2.2 kW (S1 operation)
Drive power head	0.75 kW (S1 operation) resp. 1.1 kW (S3 operation)
Connection power	6 kVA
Power supply	400 V / 50 Hz (3Ph / N / PE), 480 V / 60 Hz (3Ph / N / PE), 220 V / 60 Hz (3Ph / N / PE)
Weight (depending on configuration)	approx. 390 kg

QPOL XL
ANY QUESTIONS?

